



METO High Quality Fixings & Accessories for Electronic Shelf Labels (ESL)

SOLUM

Catalog · Katalog



METO[®]

METO – EXCELLENT MERCHANDISE IDENTIFICATION AND LABELING

METO offers the global retail, service and industrial sectors a broad spectrum of innovative, practical and highly efficient solutions.

These solutions break down into three core areas:

■ **Let us know your needs.**

We are sure to come up with the perfect solution.

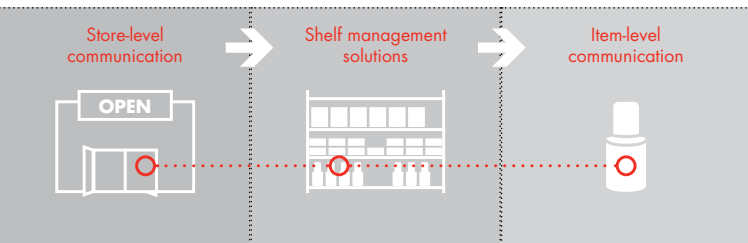
METO has been pioneering new ideas and innovative solutions for retailers for over 50 years now. Our ideas are tailored precisely to the needs of the retail sector and play a role in changing the shape of the market. We have developed numerous sales promotion solutions which have since become integral parts of the standard retail set-up.



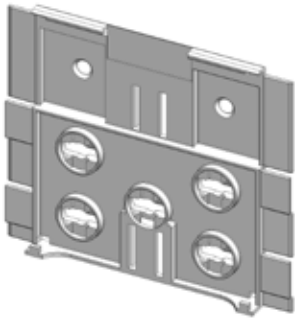
METO invented the first hand labeler. The PromoSign price cassettes and poster writing kits also bear our name. Many other patented solutions which will be familiar to you from everyday use are products from our company. We are always looking for ways to make our products even more flexible and easier to use, so that we can meet the needs of retailers.

The METO guarantee

- Customised sales solutions to satisfy your requirements
- Full service from initial planning through to installation
- Comprehensive product range
- Sound, professional advice
- Decades of experience in the retail trade



ESL FIXING SOLUTIONS



Adapter plate, large (M1)

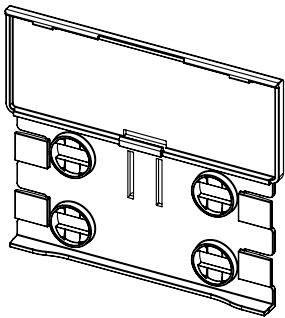
Application: Adapter plate for Solu M Electronic Shelf Label 4,2. Simply click the plate onto the label and attach to the shelf with METO shelf accessories.

Integrated slot for customized crowners (left and right and top).

■ Art. no.	Application Solu M 4.2 (M1)
9474054	
on request	With magnetic tape
on request	With transparent tape

Material: PC
Size: 100 x 86 mm
Colour: Transparent

Unit quantity: 25



Adapter plate, large (M1&M2)

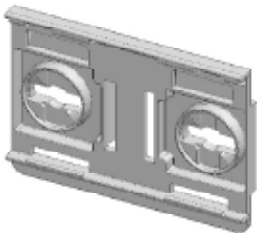
Application: Adapter plate for Solu M Electronic Shelf Label 4,2. Simply click the plate onto the label and attach to the shelf with METO shelf accessories.

Integrated slot for customized crowners (left and right).

■ Art. no.	Application Solu M 4.2 (M1&M2)
9488908	
on request	With magnetic tape
on request	With transparent tape

Material: PC
Size: 96 x 83,5 mm
Colour: Transparent

Unit quantity: 25



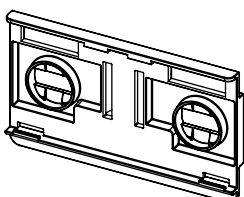
Adapter plate, small (M1)

Application: Adapter plate for Solu M Electronic Shelf Labels 2.2, 2.9, 4.2. Simply click the plate onto the label and attach to the shelf with METO shelf accessories.

■ Art. no.: 9474056

Material: PC
Size: 57 x 40,7 mm
Colour: Transparent

Unit quantity: 25



Adapter plate, small (M2)

Application: Adapter plate for Solu M Electronic Shelf Labels 2.2, 2.7, 2.9, 3.3. Simply click the plate onto the label and attach to the shelf with METO shelf accessories.

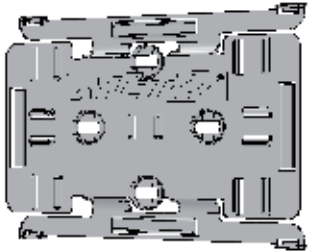
■ Art. no.: 9484502

Material: PC
Size: 68 x 40,4 mm
Colour: Transparent

Unit quantity: 25



ESL FIXING SOLUTIONS



Adapter plate, X-large 6.0 (M1)

Application: For Solu M Electronic Shelf Label 6".
Simply click the plate onto the label and attach to the shelf with METO shelf accessories

Integrated slot for customized crownners (left and right and top).

■ Art. no.: 9474298

Material: PC
Size: 140 x 100 mm
Colour: Transparent

Unit quantity: 25



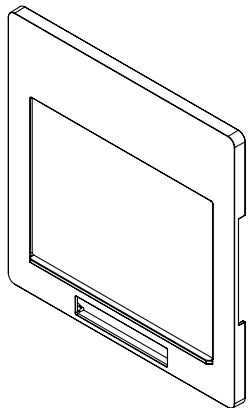
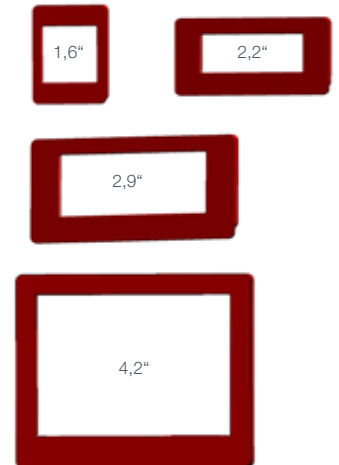
Snap-on frames (M1)

Application: Customized printed snap-on frames for Solu M Electronic Shelf Labels.
Can easily be clicked onto the labels.

■ Art. no.	Application
On request	1,6"
On request	2,2"
On request	2,9"
On request	4,2" (M1&M2)

Material: ABS
Colour: On request with optional customized print

Unit quantity: 25



Snap-on, extended 4.2 (M1&M2)

Application: Customized printed snap-on frames for Solu M Electronic Shelf Labels.
With wider print area above. Can easily be clicked onto the labels.

■ Art. no.: On request

Material: ABS
Size: 106 x 110 mm
Print area: 105 x 29 mm
Colour: On request with optional customized print

Unit quantity: 25

Closed Shelf-edge Rail for fruit & vegetables

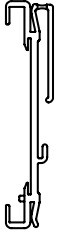
Application: Closed shelf-edge rail to hold and protect Solu M Electronic Shelf Labels 4,2". Front part is transparent and can be folded upwards.
In combination with adapter plate large Art. 9474054.

■ Art. no.: 9478580 (1.000 mm)
9478499 (1.240 mm)

Material: PVC
Color: Back: dark grey RAL 9007
Front: transparent

Unit quantity: 5





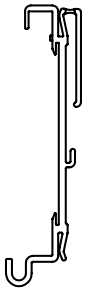
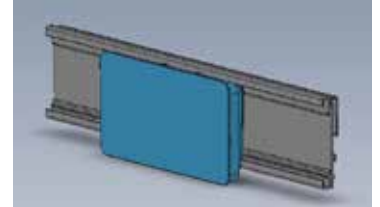
Shelf edge Profile, flexible (M1)

Application: For Solu M Electronic Shelf Labels 1.6/2.2/2.9/4.2
With flexible front part
With adhesive foam tape on backside

■ Art. no.: 9482143

Material: PVC
Size: 1.235 mm
Colour: Transparent

Unit quantity: 100



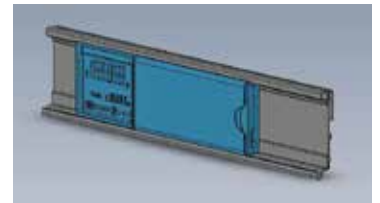
Shelf edge Profile, flexible (Segmented)

Application: For Solu M Electronic Shelf Labels Segmented S, M, L
With flexible front part

■ Art. no.: 9484503

Material: PVC
Size: 985 mm
Colour: Transparent

Unit quantity: 100



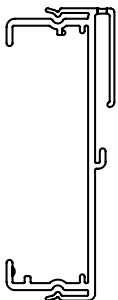
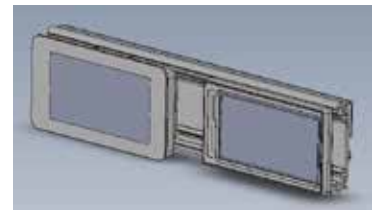
Shelf edge Profile, flexible (M1&M2)

Application: For Solu M Electronic Shelf Labels
With flexible front part

■ Art. no.: On request

Material: PVC
Size: On request
Colour: Transparent

Unit quantity: 100



Shelf edge Cover Profile, flexible 2.9 (M1)

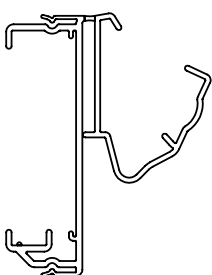
Application: For Solu M Electronic Shelf Labels 2.9
With flexible front part. With optional front cover.

Material: PVC
Size: On request

■ Art. no.: On request

Colour: Transparent

Unit quantity: 100



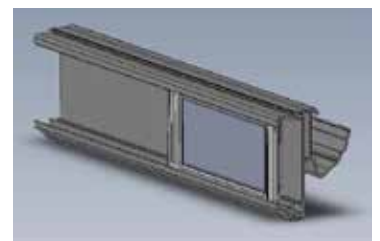
Shelf edge TLS Cover Profile, flexible 2.9 (M2)

Application: For Solu M Electronic Shelf Labels 2.9
With flexible front part. With optional front cover.

■ Art. no.: On request

Material: PVC
Size: On request
Colour: Transparent

Unit quantity: 100



ESL FIXING SOLUTIONS



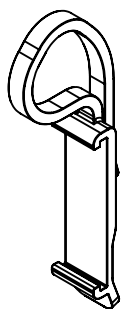
Security hooks

Application: Fixing device for PromoSign cassettes, for attachment to wire baskets, tubes or similar.
Slide in fixing at ESL back plate Art. No. 9488908.

- Art. no.: 8329802 - 12 mm
- Art. no.: 8329803 - 16 mm

Material: POM
Colour: White

Unit quantity: 50



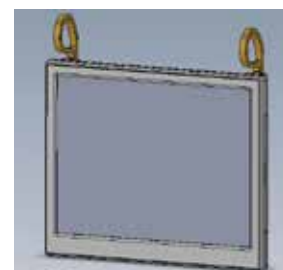
Suspension hook (M2)

Application: To fix Solu M 6.0 & 7.4 ESL at 12 or 16 mm wire.

- Art. no.: On request

Material: POM
Colour: White

Unit quantity: 100



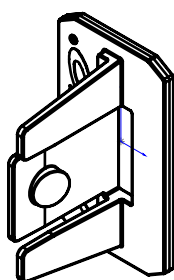
Box Clamp small

Application: To fix METO cassettes and ESL Tags (via back plate) at card boxes.
Slide in fixing at ESL back plate Art. No. 9474056, 9474054, 9488908, 948502.

- Art. no.: On request

Material: PC
Colour: Transparent

Unit quantity: 25



Shelf Stopper (M1)

Application: To fix at Solu M Shelf Edge Profile and present preprinted Crowner.

- Art. no.: 9473973

Material: PC
Colour: Transparent

Unit quantity: 50



PromoSign individual stand

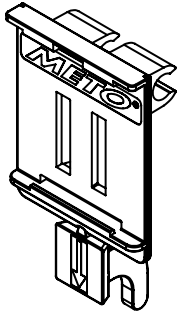
Application: To be used in service counters (delicatessen, meat, cheese etc.).
Height till the lower edge of the cassette - see behind Art.no.

- Art. no. 8327200 5 cm
- Art. no. 8327201 10 cm
- Art. no. 8328007 15 cm

Material: PC
Colour: Transparent

Unit quantity: 25



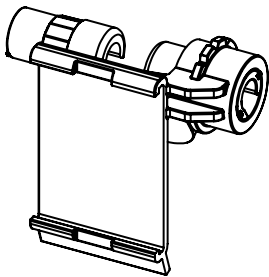


Peghook adapter for Solu M ESL 1.6 (M1)

Application: Adapter for all kinds of peghooks with adjustable angle.
 ■ Art. no.: 9473972

Material: PC
 Colour: Transparent

Unit quantity: 50



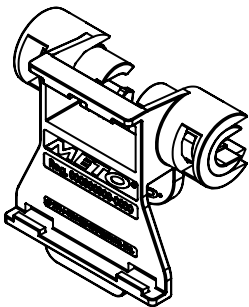
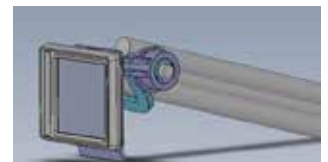
Peghook adapter for Solu M 1.6 (M1&M2)

Application: Adapter for all kinds of peghooks with adjustable angle.
 Consists of two pieces.

■ Art. no.: 9480769

Material: PC
 Colour: Transparent

Unit quantity: 50



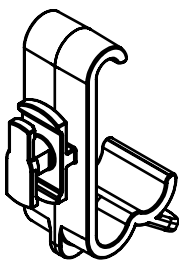
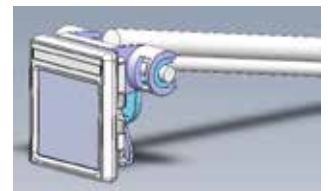
Peghook adapter for Solu M 1.6 (M2)

Application: Adapter for all kinds of peghooks with adjustable angle.
 Consists of two pieces.

■ Art. no.: On request

Material: PC
 Colour: Transparent

Unit quantity: 50



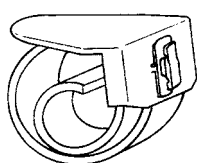
Shelf clip Tego, adjustable

Application: Adapter to fix in combination with adapter plates at Tego shelf.
 Adjustable in two positions.

■ Art. no.: 9482802

Material: POM
 Colour: White

Unit quantity: 100



Unifix rolls

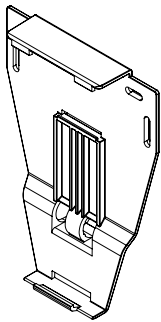
Application: Fixing device for shelf frames, consisting of a transparent holder and a white "snap-in" roll with spring effect, with which the frame can be attached to all types of shelving.

■ Art. no.: 8312162

Material: Polycarbonate / POM
 Size: 77 x 31 x 45 mm
 Colour: Semi-transparent, white

Unit quantity: 25





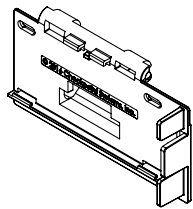
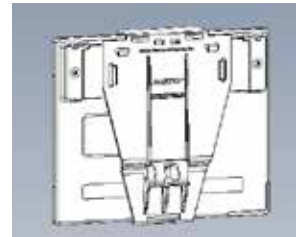
F&V basket fixing 6.0 (M2)

Application: Strong fixing device to fit Solu M 6.0 in combination with METO box clamp 9173217 or 9173219.

■ Art. no.: On request

Material: PC
Colour: Transparent

Unit quantity: 50



Smart clip 2.9 (M2) Storebest

Application: Adjustable fixing device to fit Solu M 2.9 at Storebest shelves. With crowner insert (right hand side).

■ Art. no.: On request

Material: PC
Colour: Transparent

Unit quantity: 50



CHECKPOINT SYSTEMS INTERNATIONAL GMBH
Ersheimer Straße 69
D-69434 Hirschhorn
Tel.: +49 (0)6272-928-0
info@meto.com

www.meto.com

METO[®]